

The logo for Afruwear Uniforms Kenya is centered in the image. It features the brand name 'afruwear uniforms' in a white, bold, italicized sans-serif font with a black outline. A small red and white star is positioned above the 'a' in 'afruwear'. Below the brand name, the word 'KENYA' is written in a smaller, black, all-caps sans-serif font.

afruwear
uniforms
KENYA



Chapter 1

Group Introduction





africa[★]
uniforms

Established in 1970s as LeeKwun Knitwear Factory in Hong Kong, the company has over 50 years of experience in garment manufacturing.

Since 2015, we relocated our manufacturing hub to Africa and have been continuously investing to expand within the East and the South African Region. With extensive experience producing quality garments in Asia, we inherited the advanced technology and manufacturing management SOP to Africa where production cost could be further controlled. Our factory managers are professionals hired from Bangladesh, China, India, Kenya, Lesotho and Rwanda - a true winning line-up which understand garments inside out.

Our portfolio consists of wholly-owned subsidiary factories and partnering factories with almost 100 production lines of 3,000+ workers which are capable to roll out 500,000+ pieces of uniform item and 700,000+ pieces of knits and woven per month. We are able to produce almost any type of garment products at a reasonable cost.

The company's sales in 2022 totaled US\$10 million and will continue to increase when the economy resumes.





1970s

LeeKwun Knitwear Factory
(HONG KONG)
Established



2008

HongLee Garment Ltd.
shop 4 students
(HONG KONG)
Established



2015-16

Entered ETHIOPIA,
RWANDA
Africa Uniforms Ltd.
Supreme Garment Ltd.
Established



2019-22

Entered LESOTHO, KENYA
Africa Uniforms (Singapore)
PTE Ltd.
Afriwear Uniforms EPZ Ltd.
Established



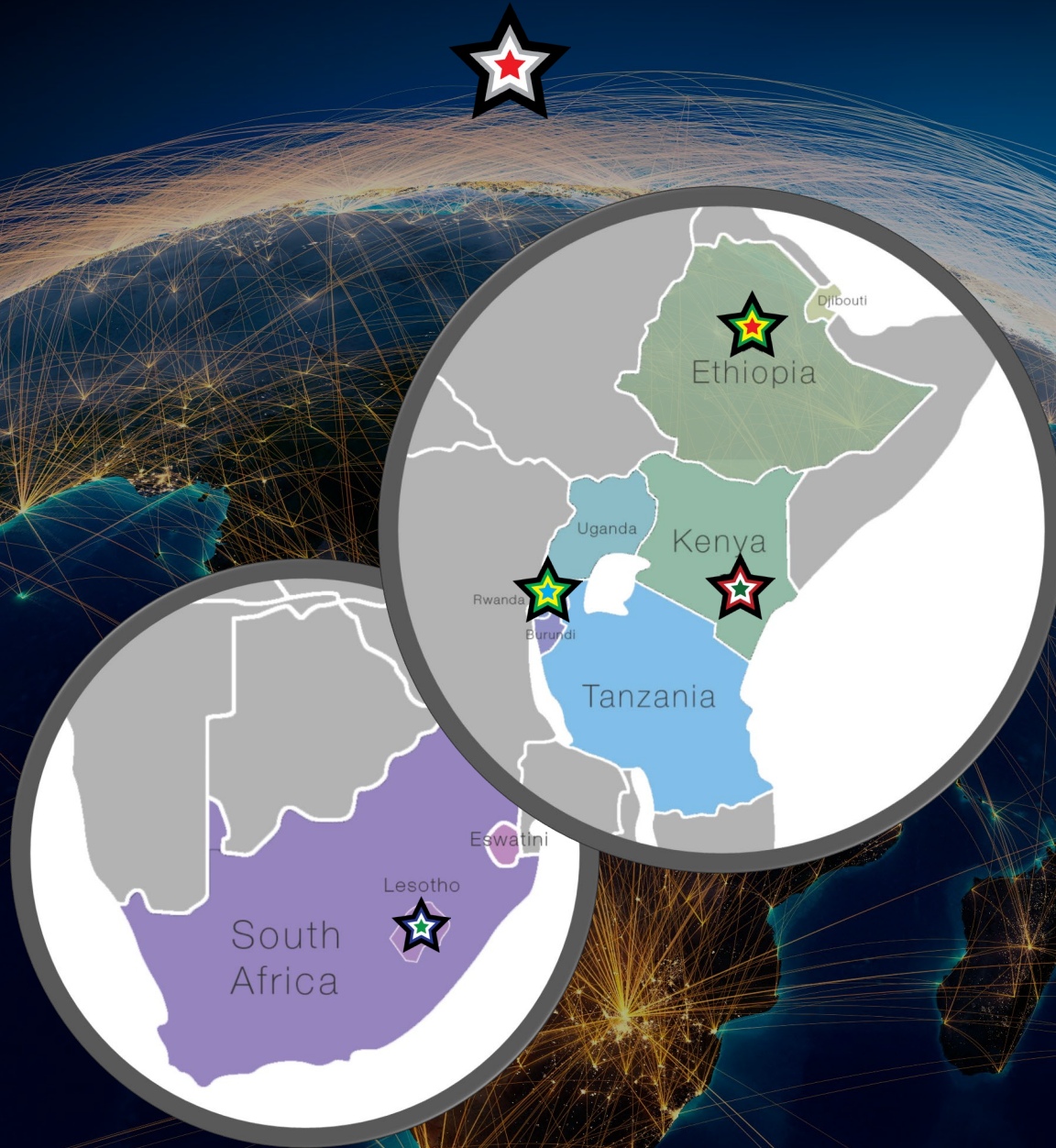
ETHIOPIA

KENYA

LESOTHO

RWANDA

FACTORY NETWORK





Chapter 2

Kenya 101





EHTIOPIA



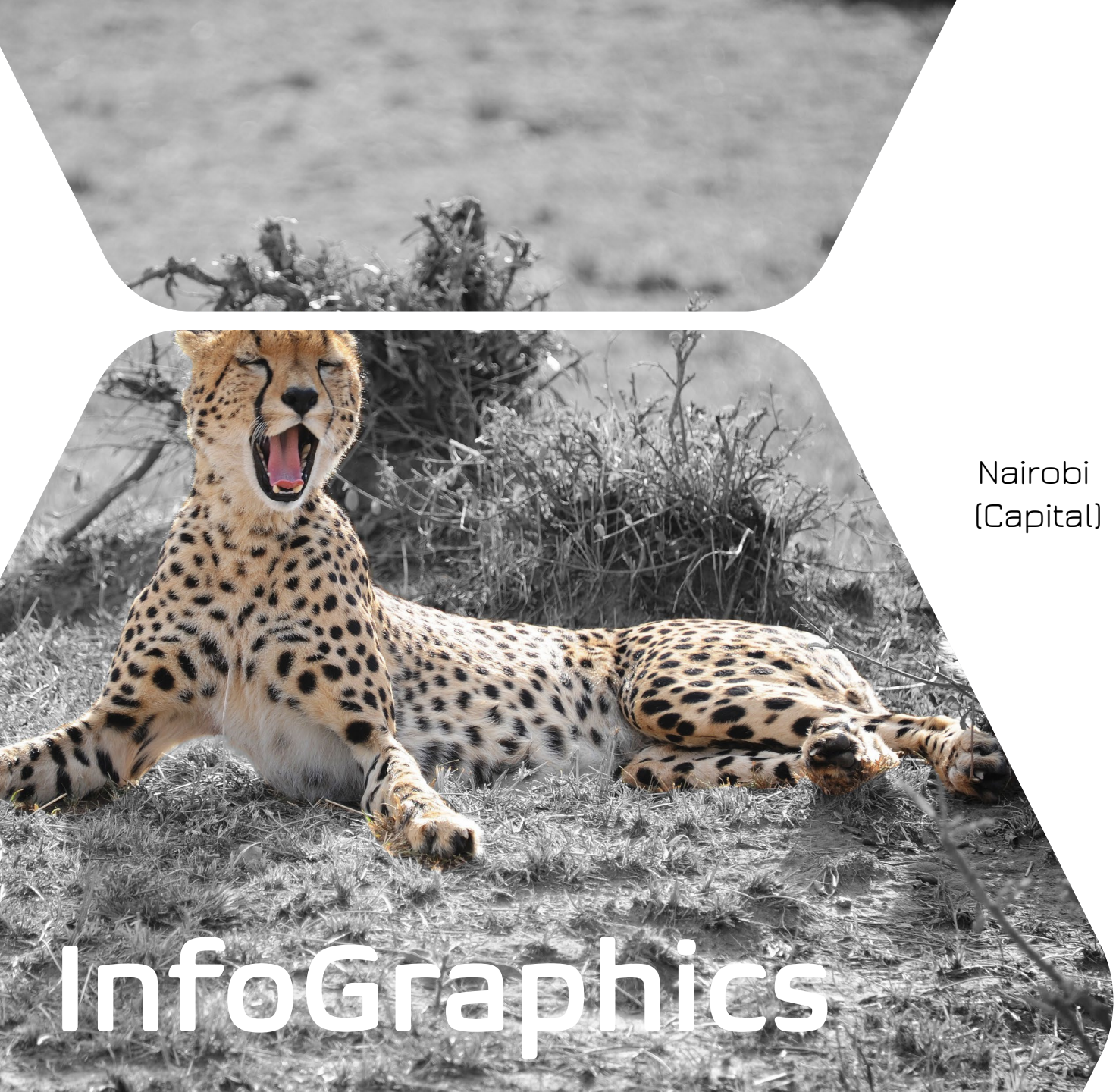
KENYA



LESOTHO

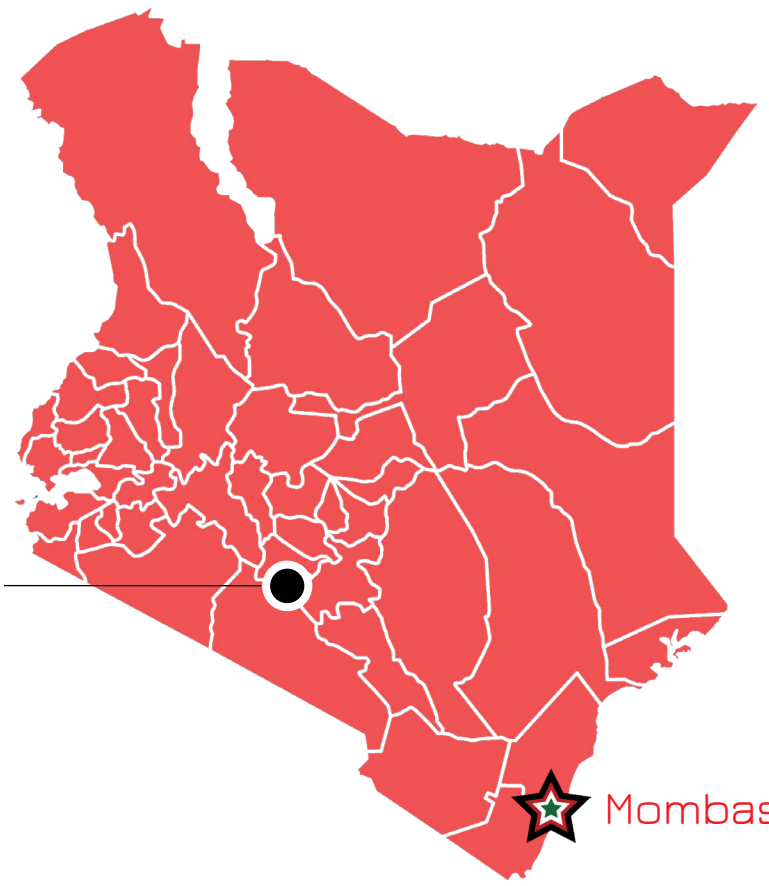


RWANDA



InfoGraphics

Nairobi
(Capital)



Mombasa



Total Area: 580,367 km²




Population: 53,770,000



Language: English, Swahili



A savanna landscape with a herd of zebras grazing in the foreground and a city skyline in the background. The zebras are in the lower half of the frame, and the city is visible in the distance under a clear sky.

Economic history shows that the clothing and textile industry in Kenya played an important role in the industrialization of today's developed countries. This is because of the industry's unique characteristics of being labor intensive and its links with other sectors of the economy such as agriculture.

The apparel sector in Kenya has a three-tiered structure: in the EPZ, there are 21 large companies, and outside the EPZ there are 170 medium and large companies and more than 70,000 micro and small ones.

Currently, the sector contributes to 7 percent of the country's export earnings. The textiles and apparels sector is currently a critical foreign exchange earner in the manufacturing industry. Kenya as at now is the largest exporter of apparel under AGOA with about Ksh. 47 billion worth of exports in 2019 and Ksh 39 billion in 2020 during the pandemic.

GARMENT INDUSTRY IN KENYA

ADVANTAGES OF GARMENT MANUFACTURING IN KENYA

- Availability of highly trained/ trainable labor
- Productive workforce
- Preferential access to the USA (AGOA), EU (EPA), UK (EPA), EAC, COMESA and now the African continent
- Market-driven economy
- Efficient logistics link to the global world
- Government's favorable tax measures, including the removal of duty on capital equipment and other raw materials

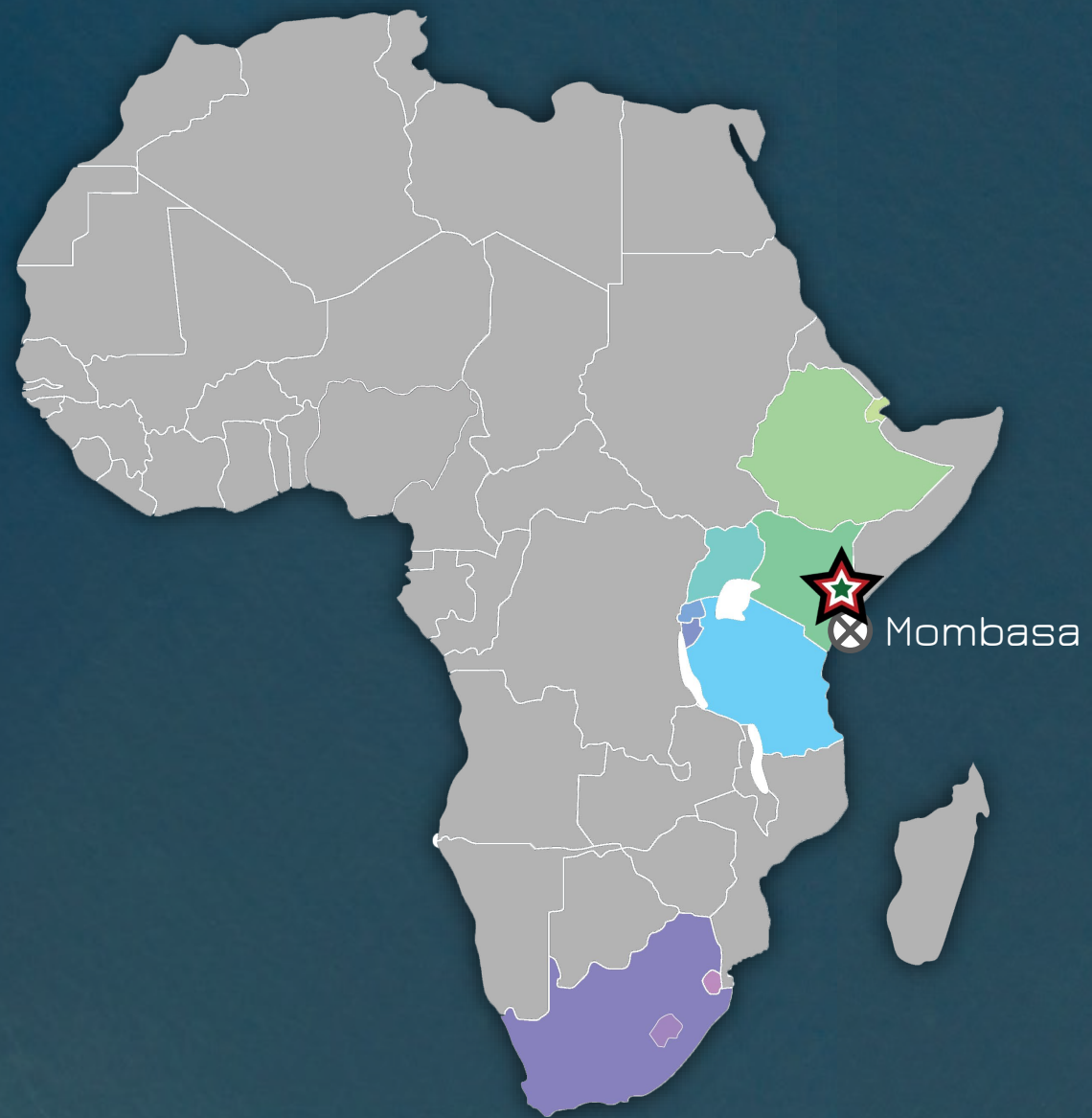
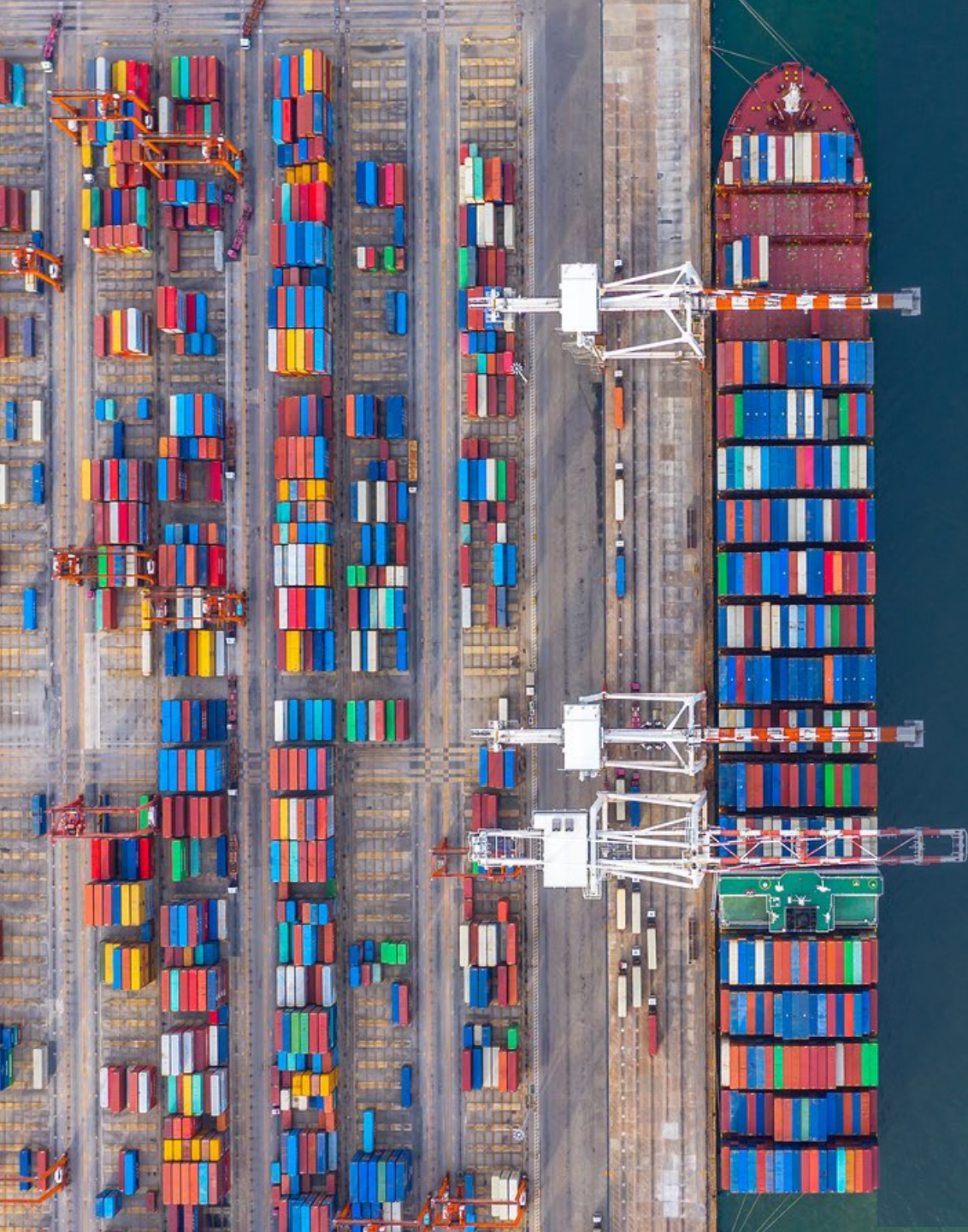




Chapter 3

Shipping Ports

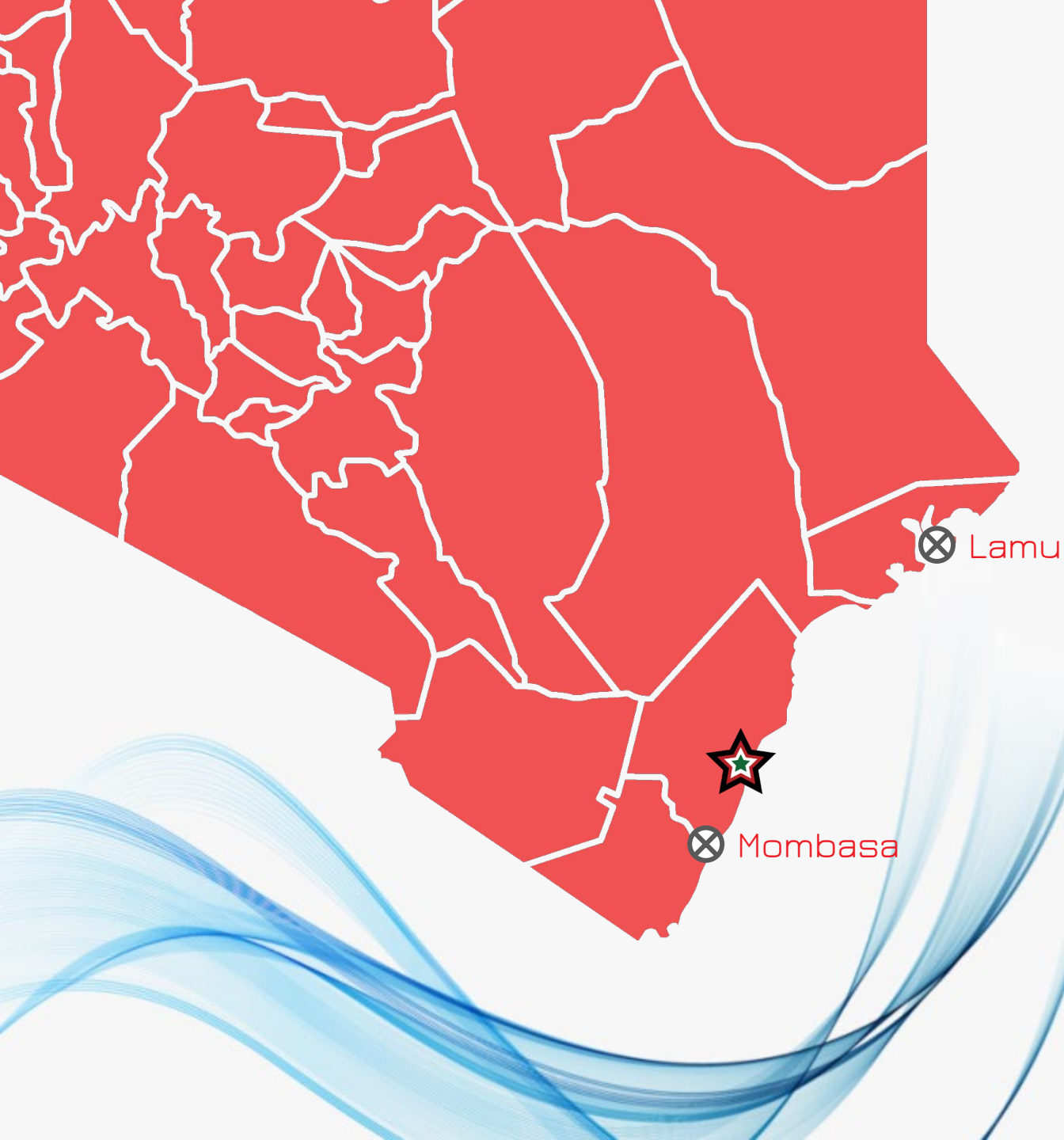






Situated on the African Coast, Mombasa Port is not only the premier port of Kenya but the largest and also the busiest port of the eastern African region. The annual handling capacity of the port is 2.65 million TEU's.

PORT OF MOMBASA



Kenya launched its mega infrastructure project in 2012, the Port Lamu, which is a part of an ambitious transport corridor between Lamu (a small archipelago north of Mombasa in Kenya), South Sudan and Ethiopia. The Port of Lamu, constructed by China Communications Construction Company, is believed to be a cornerstone of the Kenyan government's Vision 2030 development plan. The Lamu port is going to be Kenya's second deep-water port after Mombasa.

With a depth of **17.5m**, as opposed to 15m in Mombasa, Port Lamu is in an ideal position to handle large container ships that are unable to dock at Mombasa. It is predicted that the traffic is expected to reach **23.9 million tons** by 2030, inclusive of demand from Kenya, South Sudan and Ethiopia.



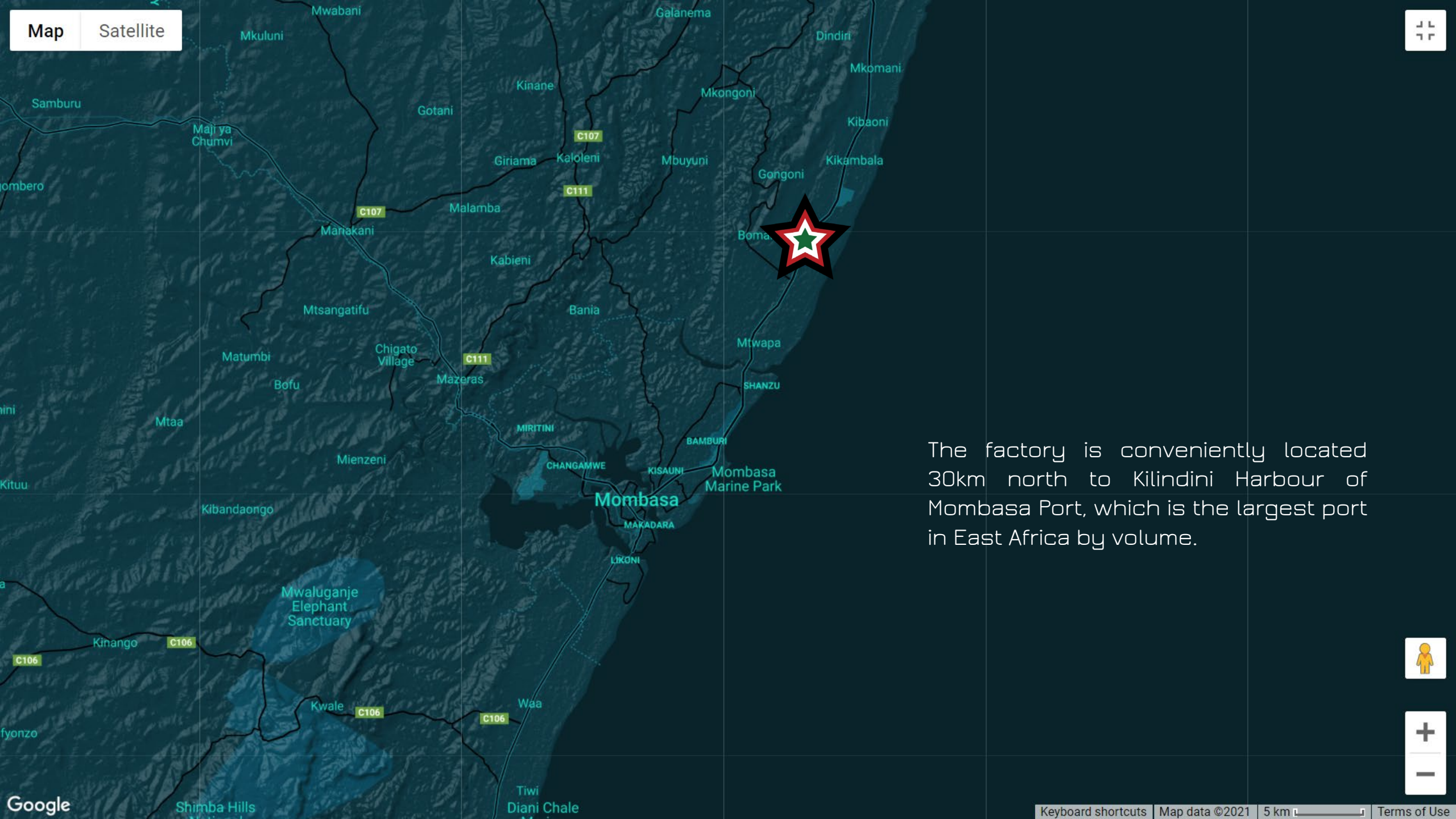
Phase I of **PORT LAMU** has been in operation since May, 2022



Chapter 4

Geographic Location





Map Satellite

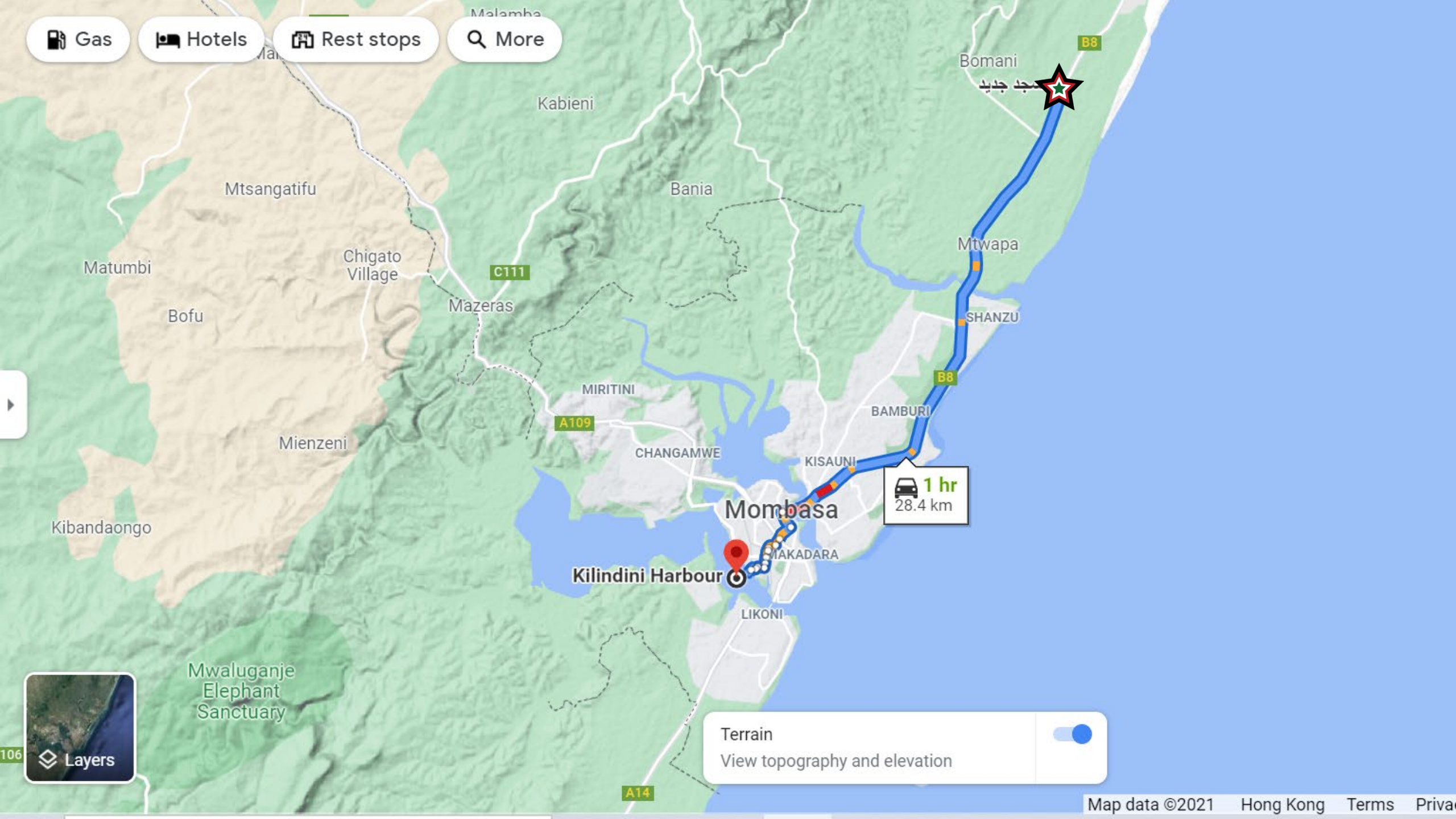


The factory is conveniently located 30km north to Kilindini Harbour of Mombasa Port, which is the largest port in East Africa by volume.



Google

- Gas
- Hotels
- Rest stops
- More



Layers

Terrain
View topography and elevation

Chapter 5

Factory Attributes





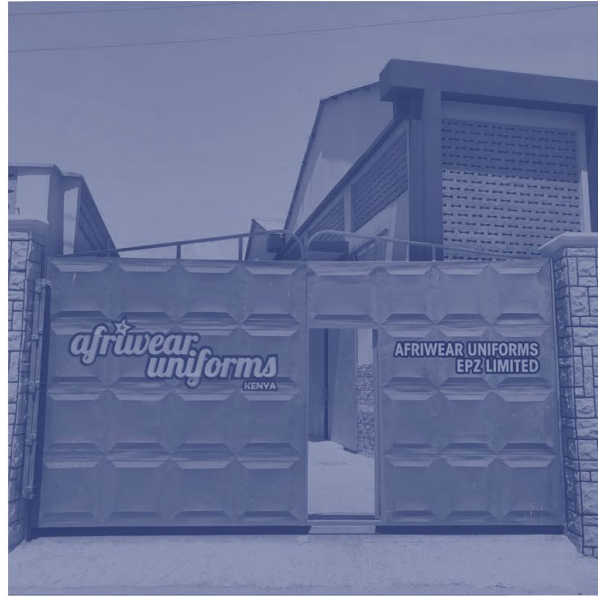
BACKGROUND

With direct investment on wholly-owned factories in Ethiopia and Rwanda already, Africa Uniforms eyed on Kenya as the next country to set up establishment.

Kenya has a rich history on garment manufacturing. The labor force is relatively more skillful and well-trained comparing to other territories in Africa. Our facility is conveniently located just 30km away from Mombasa Port, which has the advantage to enjoy shorter logistic lead time and lower transportation cost.

Initially, the factory has **12 lines** in PHASE I. After a year of expansion, AU Kenya now has an additional of **7 lines** in PHASE II ALL in operations and **8 lines** in PHASE III (ready in Q3, 2023) on the same premises. It is expected the factory will scale up to **40+ production lines** and a **centralized warehouse** in 2 years time





AFRIWEAR UNIFORMS

MOMBASA, KENYA

Production Line: 27+
Woven / Knit

Wholly-owned

FLOOR SPACE
8,000 sqm

TOTAL WORKERS
1,000

CERTIFICATION
WRAP GOLD, BSCI, GRS in progress

YEAR OF ESTABLISHMENT
April, 2022

PRODUCTION PER YEAR
4,000,000 pcs

MAIN PRODUCTS
T-Shirts, Polos, Jackets, Uniforms, Woven Shirts, Swimwear,
Hoodies, Aprons, Collar Shirts, Pants, Seamless Pants

*screen printing available within the facility

Chapter 6

Factory Gallery



The image shows a large, brown, double-leaf gate with a diamond-shaped embossed pattern. The gate is set between two stone pillars. The left pillar has a white cap. The gate is partially open, revealing a paved area and a building in the background. The sky is clear and blue. The text on the gate is in white with black outlines. The left leaf features the 'afriwear uniforms KENYA' logo, and the right leaf features the company name 'AFRIWEAR UNIFORMS EPZ LIMITED'.

afriwear
uniforms
KENYA

**AFRIWEAR UNIFORMS
EPZ LIMITED**

FRONT GATE

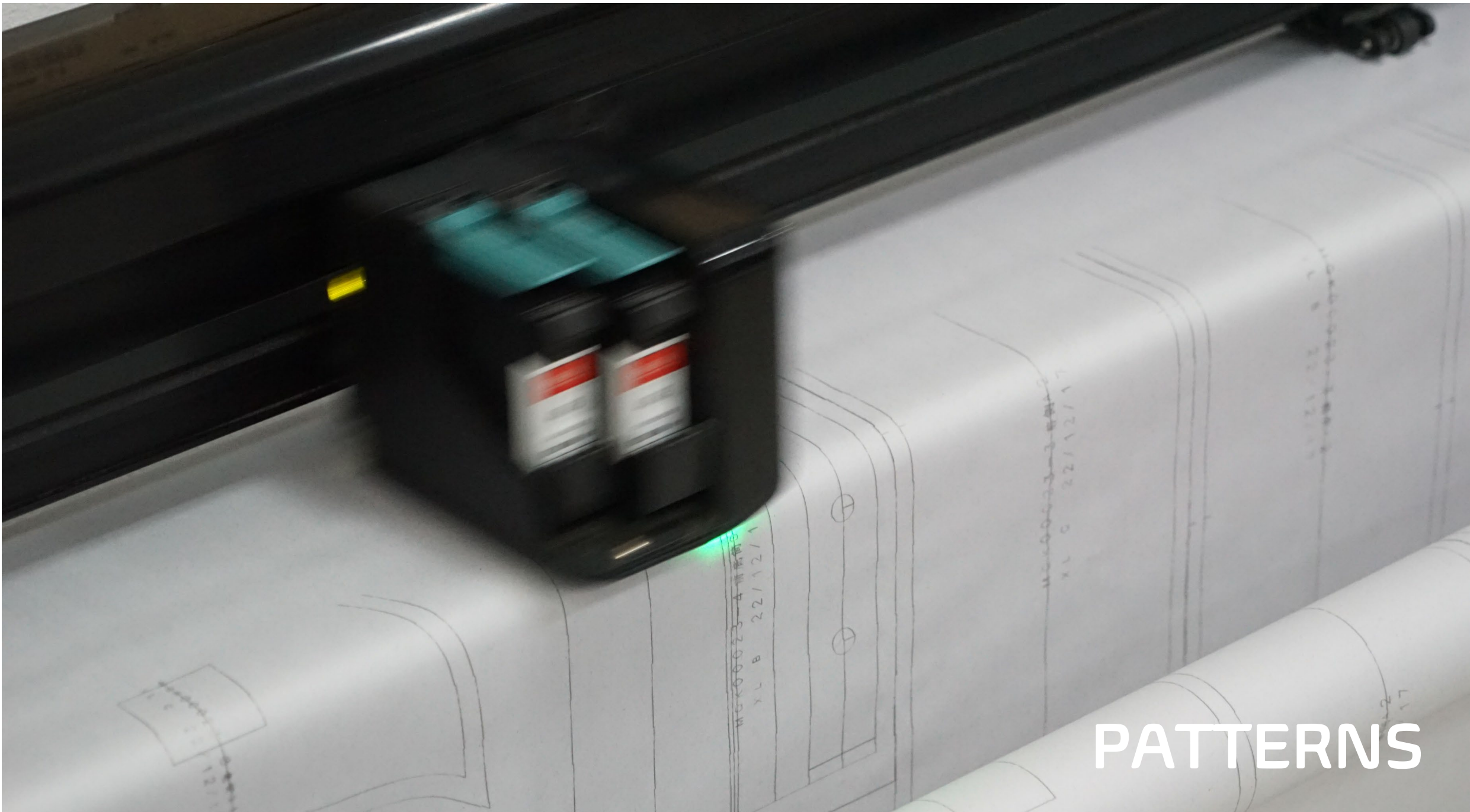




ADMIN



LOADING BAY



PATTERNS



RECEIVING





CUTTING





PRODUCTION LINES





PRODUCTION LINES



PRODUCTION LINES



PRODUCTION LINES





PRODUCTION LINES



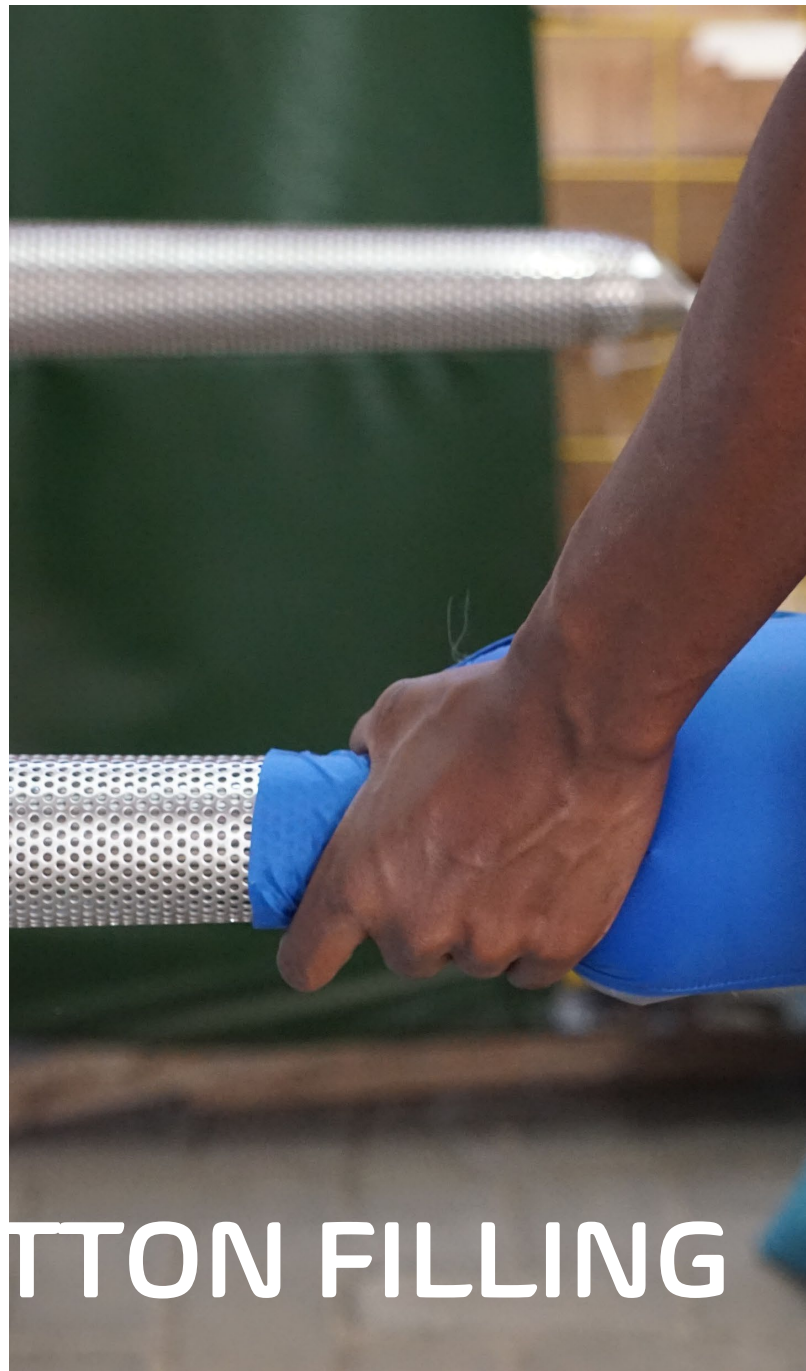
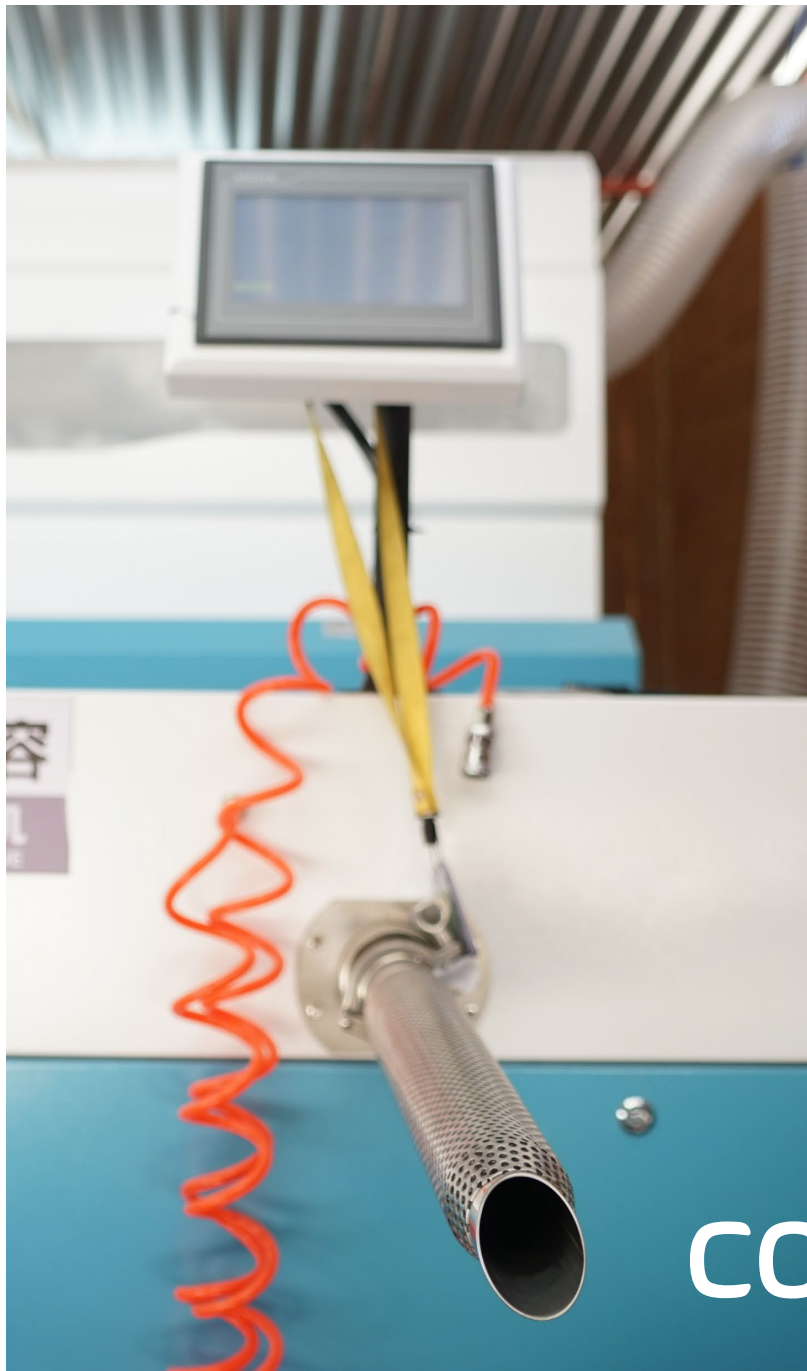
COTTON FILLING





COTTON FILLING





COTTON FILLING







PACKING



PACKING



PRINTING



PRINTING



PRINTING



PRINTING





PRINTING

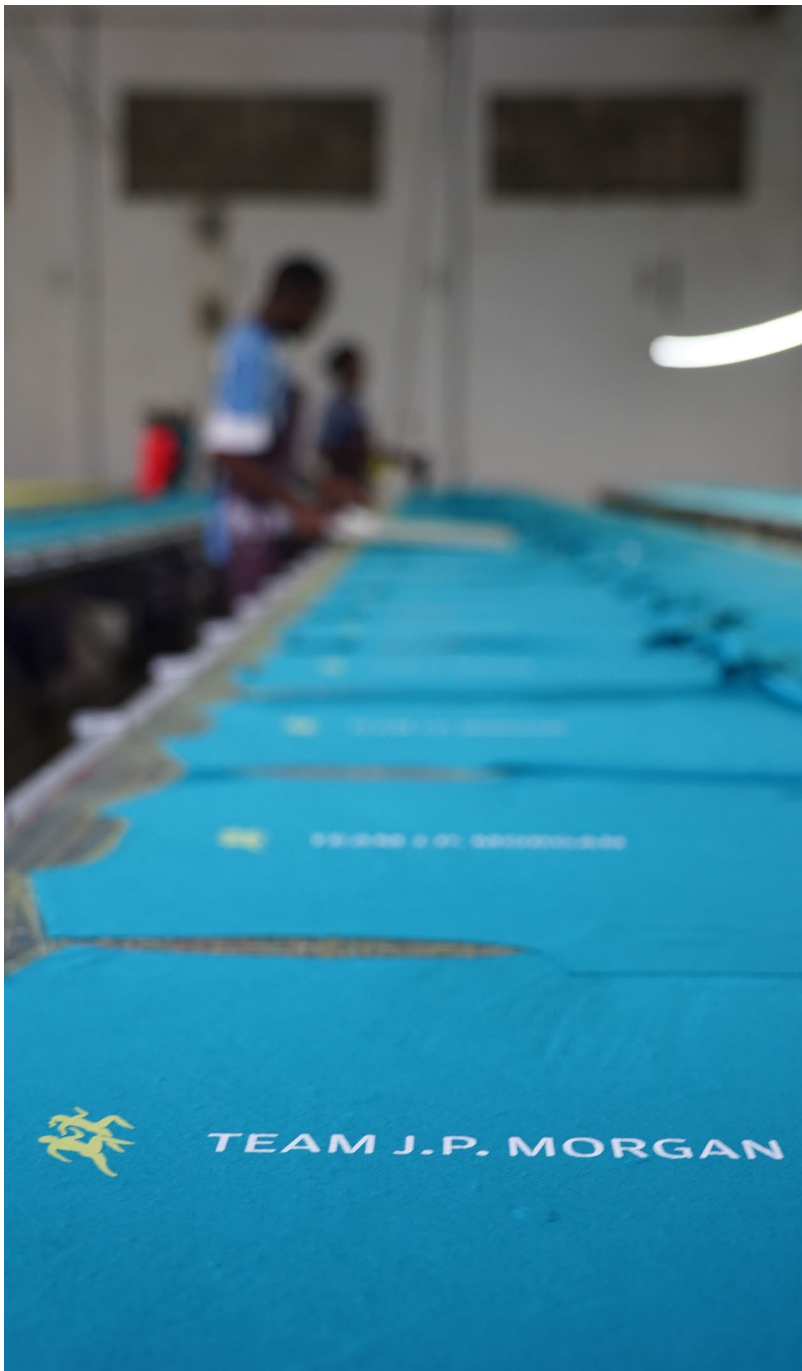


FINISHER

J.P. Morgan
Corporate Challenge®



PRINTING





SAMPLE ROOM

® **CLIQUE**
REG. TRADEMARK

XXL/TTG

Made in Kenya
Fabriqué en Kenya

Chapter 7

Product Gallery





 **CLIQUE** 
REG. TRADEMARK

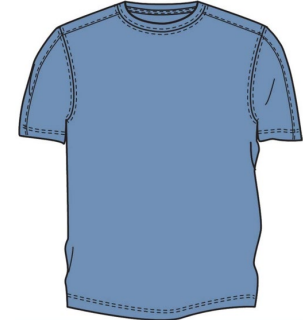
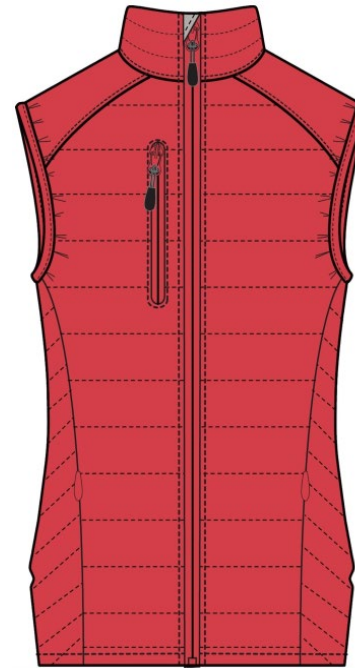


 **CLIQUE** 
REG. TRADEMARK





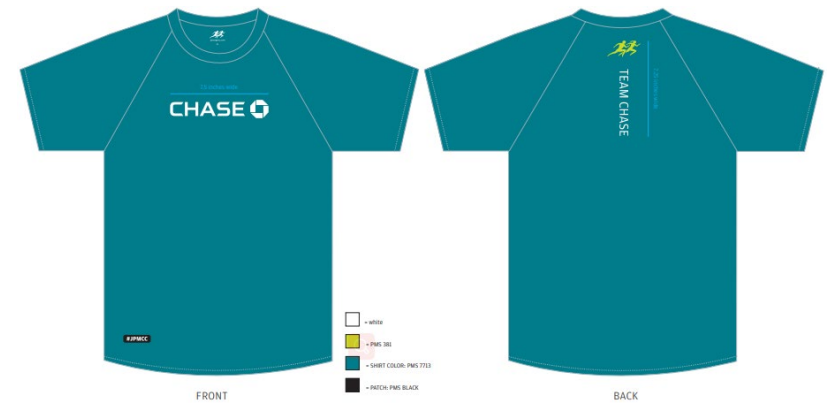




CLIQUE
REG. TRADEMARK



screen printing conducted within AU







Exclusive of Decoration / Exclusivo de Decoración /
Decoración non Comprise /
Fabricado en Kenia /
RN#71222



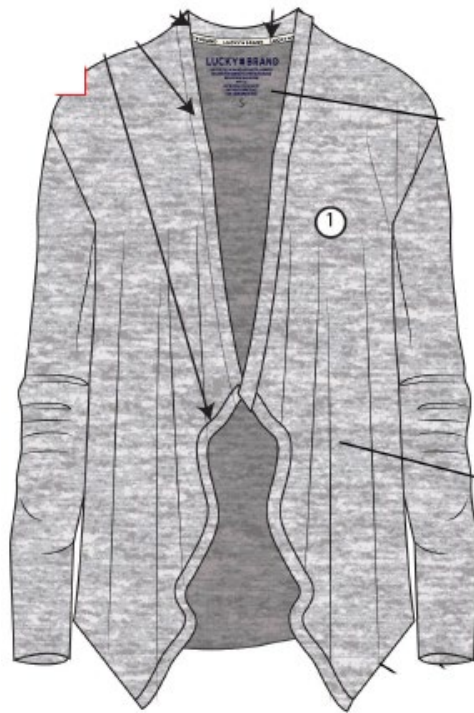
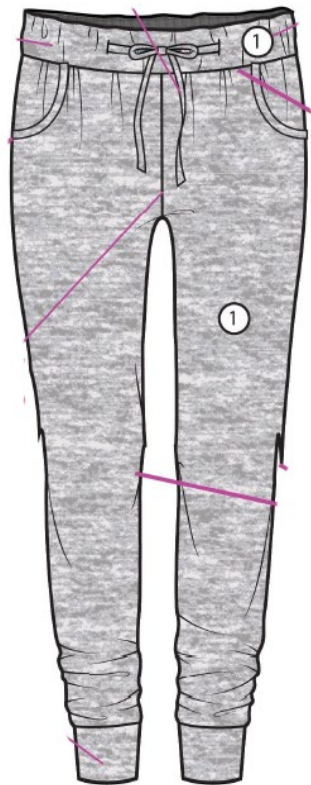
Live 2 Lounge

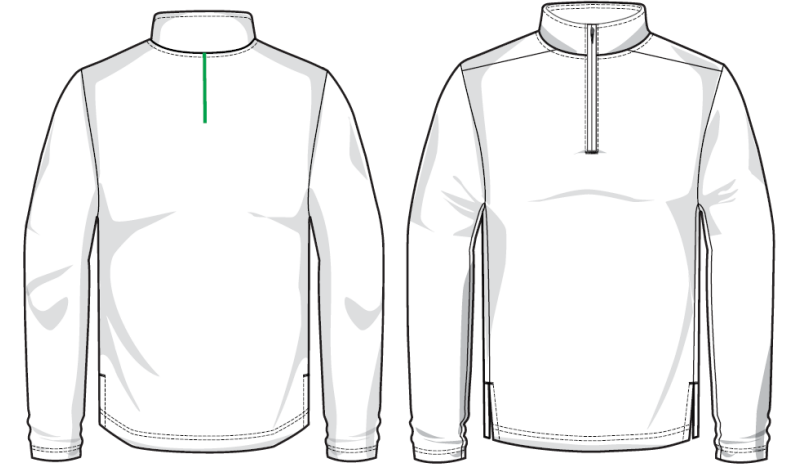


4-PIECE ESSENTIAL SET
OPEN-FRONT CARDIGAN, TEE, TANK & JOGGER

XS
Lounge
ITEM: 1644646
OLIVE
OLIVE

XS





2(X)IST



JOCKEY®



CINTAS®



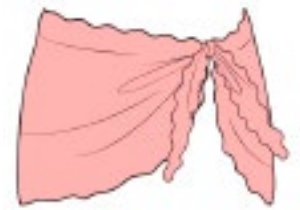
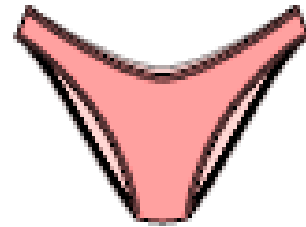
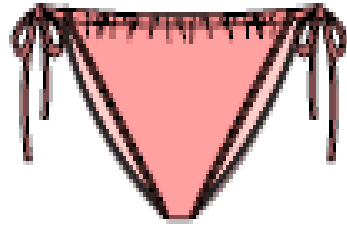
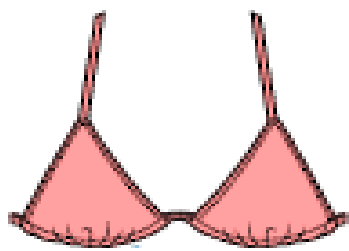
CINTAS®



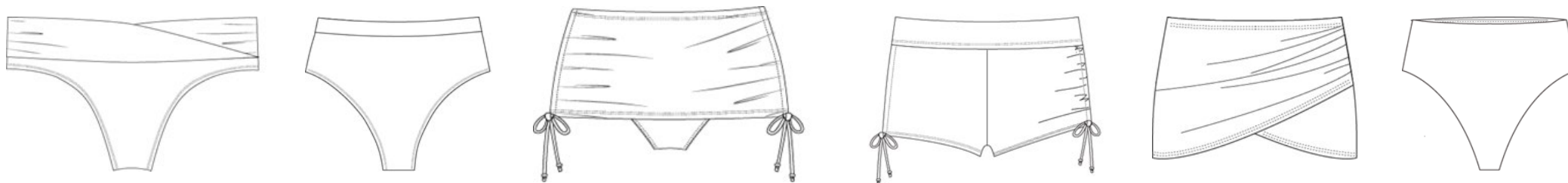
CINTAS®







NINETY-NINE^o



Freshwater

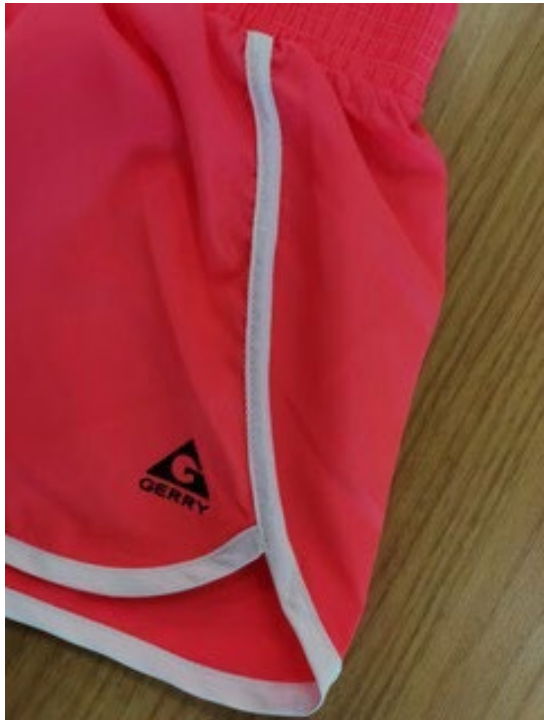




GERRY®
SINCE 1946 



GERRY®
SINCE 1946 



GERRY[®] 
SINCE 1946







Chapter 8

Social Compliance



Gold Certificate of Compliance

Afriwear Uniforms EPZ Limited

WRAP #: 128647

Certification Period: August 8, 2023 to August 8, 2024

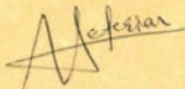
Facility Address: P.O. Box 80109, Mtwapa, Godowns on Title Number Kilifi
Mtwapa 2443, Bani Wahiba EPZ
Kenya

Production Processes: Receiving, Cutting, Sewing, QC, Pressing, Finishing, Packing and Dispatch

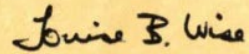
Sample Size: 10

Average Weekly Hours in Periods Reviewed: April 2023: 56 May 2023: 56 June 2023: 55

*This WRAP certificate covers the facility with the address and production processes listed above.
Please refer to the full audit report for details.*



Avedis H. Seferian
President & CEO



Holly Wise
Chair





OVERALL RATING





Chapter 9

Development Blueprint





1

PHASE I: 2,100 sqm (indoor) – in operations since April 2022

2

PHASE II: 2,310 sqm (indoor) – in operations since October 2022

3

PHASE III: 3,000 sqm (indoor) – in operations from July 2023

4

PHASE IV: 7,800 sqm (indoor) – in operations from Q4 2023 – UNDER CONSTRUCTION



Chapter 10

Sustainability Initiatives



WHAT WE CONTRIBUTED TO THE SOCIETY OVER THE PAST YEAR

- Created nearly 1,000 jobs and provided skillset training to empower local workforce. Promoted outstanding staff to become supervisors and team leaders
- 95% of the Africa Uniforms family are from the neighborhood villages, and 75% of them are women
- Ambitious to expand to create over 2,000 jobs in the coming year
- Organized staff activity during off-hours
- Formed a football team to participate in local league to develop teamwork and team spirit
- Invited a local Kenyan to be the company's director and hired an experienced Kenyan executive to be the General Manager to oversee operations



Chapter 11

1-Year Anniversary





Click the icons for videos











afrewear
uniforms
KENYA

THANK YOU



www.africauniforms.com